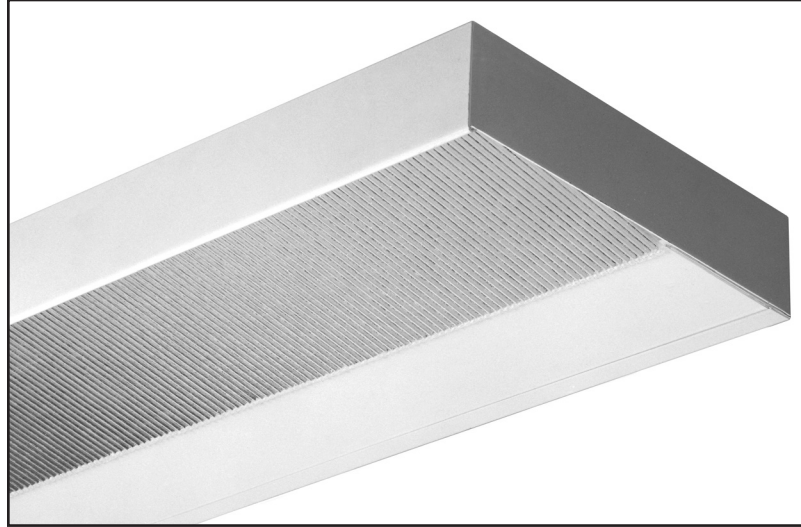


# MY-T-LITE™ TASK LIGHT T5 HIGH PERFORMANCE Series 316

## APPLICATIONS

Legion's My-T-Lite™ High Performance Task Light series designed with simplicity, low profile, and high output lamp source provides the designer with an exceptionally high quality, yet economical work station lighting unit, incorporating the best of lighting design and materials to allow for maximum lumen output and minimum glare.

Incorporates the full range of T5 generation lamps.



## SPECIFICATIONS

**CONSTRUCTION:** Die formed of 20 gauge steel, rigidly fabricated and electronically welded to insure true and perfect alignment.

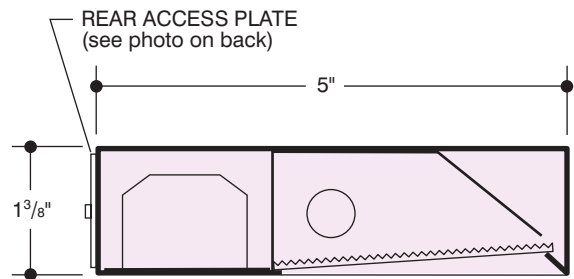
**REFLECTOR:** CAD engineered to optically correct contour, with a highly reflective finish, provides high performance efficiency and maximum distribution of light spread to the task area.

**ELECTRICAL:** Thermally protected class "P" Energy Saving Program Start, high power factor 460MA-T5 electronic ballast for 118 volt 60 Hz operation. Other ballasts, voltages and frequencies available, consult factory. All electrical components mounted on wiring channel for ease of installation and servicing.

**SHIELDING:** Clear acrylic lateral ribbed lens with a 90° included angle on 1/8" centers. A hammertone texture is applied to the lens surface to diffuse the light rays and eliminate harsh spikes of light, with the ribs running perpendicular to the lamp axis to vary light spread to the task area.

**FINISH:** All steel components parts are completely protected against rust and discoloration after fabrication through an automated conveyorized multi-stage phosphate bonding process. Finished with an electrostatic baked white polyester thermosetting powder coating. This electronic computer controlled integrated system assures consistent 88%+ reflectance efficiency and maximum durability. Other colors available, see color chart and CONSULT FACTORY.

**CERTIFICATION:** The Series 316 is U.L. and C.U.L. listed and bears the label of the I.B.E.W./AFL-CIO, Local #3.



ALL DIMENSIONS SHOWN ARE NOMINAL

MY-T-LITE™ is a trademark of LEGION LIGHTING CO., INC.  
LEGION® is a registered trademark of LEGION LIGHTING CO., INC.



**ORDERING DATA**

Catalog No.	No. and Type Lamp	Nominal Length	Wt.
316-114-ACL EBO	1-F14T5	22½"	8
★ 316-124-ACL EBO	1-F24T5HO		
316-121-ACL EBO	1-F21T5	34¼"	11
★ 316-139-ACL EBO	1-F39T5HO		
316-128-ACL EBO	1-F28T5	46"	13
★ 316-154-ACL EBO	1-F54T5HO		
316-135-ACL EBO	1-F35T5	57⅞"	17
★ 316-180-ACL EBO	1-F80T5HO		

**OPTIONS**

Suffix "RSW" after catalog no. for Positive Position Rocker Switch.  
 Suffix "GCO" after catalog no. for Grounded Convenience Outlet.  
 Suffix "CP" after cat. no. for 6 ft. cord and plug.  
 Suffix "FB" after catalog no. for Fuse and Fuseholder.  
 Suffix "DL" after catalog no. for Damp Location.

**ENERGY SAVING BALLASTS:**

**ELECTRONIC**

★ Electronic T5/T5HO Ballast

**PHOTOMETRIC DATA**

Cat. No. 316-114

Lamps: (1) Sylvania  
 FP14/835/ECO  
 rated at 1220 lumens.

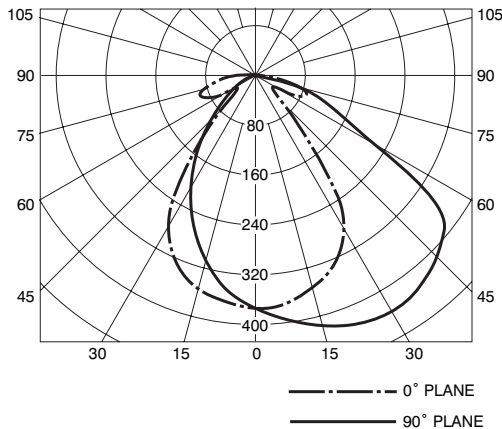
Total Luminaire  
 efficiency = 63.2%

Zonal Lumen Summary			
Zone	Lumens	% Lamp	% Fixt.
0-30	287	23.5	37.2
0-40	451	36.9	58.4
0-60	639	52.3	82.8
0-90	771	63.2	100.0
90-180	0	0.0	0.0
0-180	771	63.2	100.0

Luminance in Candela per Square Meter			
ANGLE IN DEG.	AVERAGE 0° DEG.	AVERAGE 45° DEG.	AVERAGE 90° DEG.
0	7969.	7969.	7969.
45	12319.	6684.	1828.
55	12970.	2956.	1515.
65	7422.	2407.	4514.
75	5896.	5732.	6469.
85	5836.	11430.	7296.

**Zonal Lumen Summary**

0- 5	9.
5-10	27.
10-15	43.
15-20	58.
20-25	70.
25-30	80.
30-35	84.
35-40	80.
40-45	67.
45-50	52.
50-55	37.
55-60	31.
60-65	28.
65-70	29.
70-75	29.
75-80	25.
80-85	16.
85-90	6.

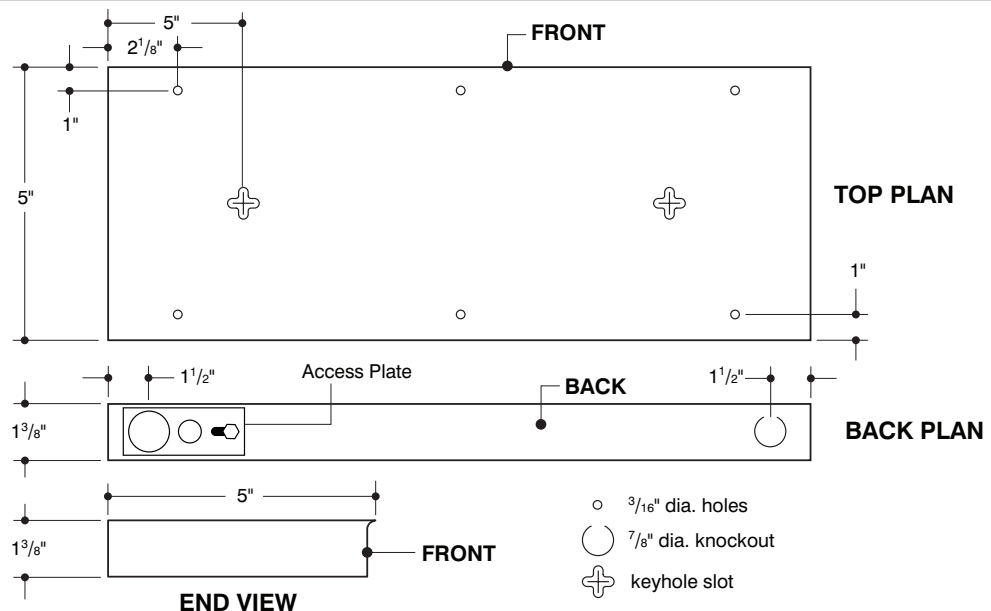


Coefficients of Utilization - Zonal Cavity Method											
Floor	20%										
Ceiling	80%			70%			50%				
Walls	70%	50%	30%	10%	70%	50%	30%	10%	50%	30%	10%
RCR	ZONAL CAVITY METHOD										
0	.75	.75	.75	.75	.74	.74	.74	.74	.70	.70	.70
1	.70	.67	.65	.62	.68	.66	.63	.61	.63	.61	.59
2	.64	.60	.56	.53	.63	.59	.55	.52	.56	.53	.51
3	.60	.54	.49	.46	.58	.53	.49	.45	.51	.47	.44
4	.55	.49	.44	.40	.54	.48	.43	.40	.46	.42	.39
5	.51	.44	.39	.35	.50	.43	.38	.35	.42	.38	.34
6	.48	.40	.35	.31	.47	.40	.35	.31	.38	.34	.31
7	.44	.37	.31	.28	.43	.36	.31	.28	.35	.31	.28
8	.41	.33	.28	.25	.40	.33	.28	.25	.32	.28	.25
9	.38	.30	.25	.22	.37	.30	.25	.22	.29	.25	.22
10	.36	.28	.23	.20	.35	.27	.23	.20	.27	.22	.19

**BACK PLANS**



EXCLUSIVE REAR ACCESS PLATE FOR EASE OF WIRING



Information supplied primarily for illustrative purposes, subject to change.  
 Consult factory for verification and minimum quantity orders. Photometrics and/or performance summaries for your particular layout available, consult factory.

