

APPLICATIONS

Like all other LEGION LIGHTING products, the Series 41 is characterized by the following quality features; Engineered control for highest light output, greatest visual comfort, enduring performance, integrity and reliability. Quality components, welded construction assuring long trouble free life. Broad range of diffusers, lengths and lamping configurations, provide the right light for the job. For offices, stores, schools, hospitals and public buildings.



SPECIFICATIONS

HOUSING: Die formed of 20 gauge cold rolled steel, rigidly fabricated, and electrically welded to insure true and perfect alignment.

SOCKET PLATE: Die formed of 20 gauge cold rolled steel, securely mounted and readily removable for socket maintenance.

REFLECTOR: Die formed of 20 gauge cold rolled steel, securely mounted to housing. Formed to optically correct contour to provide maximum efficiency, removable to access wiring. XTA-XTRALUME® energy efficient reflector available (see Options).

DOOR: Die formed of 18 ga. cold rolled steel, electrically welded throughout with concealed weld gussets at corner joints for strength and rigidity, with exclusive "LIGHT-LOCK™" design for light tight fit to housing. Door hinges from either side on concealed T-slot hinges and is secured in the closed position with white nylon knurled screws. Insertion or removal of diffusing element (see Shielding Media) is performed without the use of tools or disassembly of door.

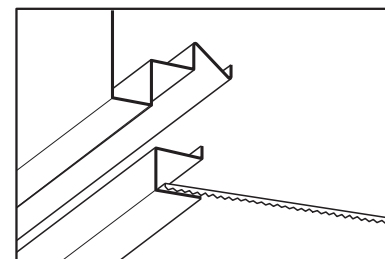
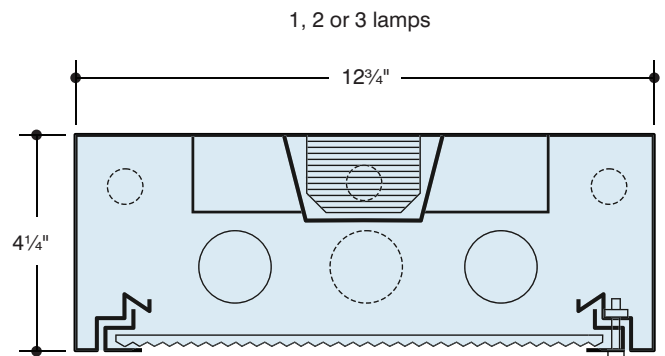
ELECTRICAL: 20 watt Trigger Start, normal power factor, 40 watt Rapid Start, high power factor, ETL-CBM-ESB® class "P", and 75 watt Slimline 430MA approved for 118 volt 60 Hertz operation. Other voltages and frequencies are available, (consult factory). ESB® 40 watt Rapid Start and 75 watt Slimline units only, (see Options listing).

MOUNTING: Installed flush with ceiling, surface or stem mounted, singly or in continuous rows. For continuous mounting – knockouts are removed in end and units joined together. Adequate knockouts for stem or flush surface mounting are provided.

FINISH: All steel component parts are completely protected against rust and discoloration after fabrication through an automated conveyORIZED multi-stage phosphate bonding process. Finished with an electrostatic baked white polyester thermosetting powder coating. This electronic computer controlled integrated system assures consistent high reflectance efficiency and maximum durability.

CERTIFICATION: The EXCELON® Series 41 is U.L. listed and bears the I.B.E.W./AFL-CIO label. Optionally listed for damp locations "DL".

EXCELON®, XTRALUME® and LEGION® are registered trademarks of LEGION LIGHTING CO., INC. LIGHT-LOCK™ is a trademark of LEGION LIGHTING CO., INC.



Exclusive LIGHT-LOCK™ design for light tight fit of door to housing. Diffuser inserted without the use of tools.

ORDERING DATA

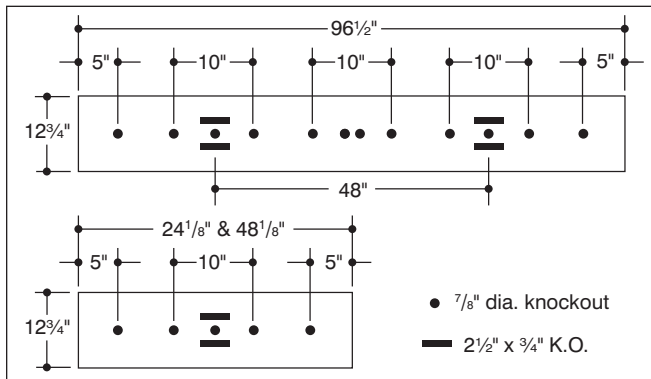
| Catalog No. | No. and Type of Lamps | Nominal Dimensions | Weight |
|-------------|---------------------------|--------------------|--------|
| ▲ 41-220 | 2-20W-T8 ▲ 2-FO17-OCT | 12" x 24" | 17 |
| ▲ 41-320 | 3-20W-T8 ▲ 3-FO17-OCT | 12" x 24" | 19 |
| 41-1BX40 | * 1-F40TT/RS | 12" x 24" | 17 |
| 41-2BX40 | * 2-40TT/RS | 12" x 24" | 17 |
| ▲ 41-140 | 1-40W-RS ▲ 1-FO-32-OCT | 12" x 48" | 37 |
| ▲ 41-240 | 2-40W-RS ▲ 2-FO32-OCT | 12" x 48" | 37 |
| ▲ 41-340 | 3-40W-RS ▲ 3-FO32-OCT | 12" x 48" | 31 |
| ▲ 41-240-8T | 4-FO32-RS ▲ 4-FO32-OCT | 12" x 96" | 54 |
| ▲ 41-340-8T | 6-40W-RS ▲ 6-FO32-OCT | 12" x 96" | 58 |
| ■ 41-296SL | 2-75W-SL ■ 2-FO96-OCT | 12" x 96" | 54 |
| ■ 41-396SL | 3-75W-SL ■ 3-FO96-OCT | 12" x 96" | 59 |

- ▲ To specify OCTRON™ ballast, add suffix "ESB/OCT" to cat. no.
- To specify OCTRON™ 265MA, FO96T-6 Rapid Start Lamp, add suffix "ESB/EBO" to cat. no.
- ** F40TT/RS is the ANSI designation of various lamp manufacturers, i.e. G.E. Lighting "Biax", Philips "PL", Osram "DULUX-L", Sylvania Twin Tube. For F50TT/RS change catalog no. Ex: **41-2BX50** etc. and consult factory. For F55TT/RS consult factory.

MATCHING 3' & 6' UNITS AVAILABLE, CONSULT FACTORY FOR MINIMUM QUANTITY ORDERS AND AVAILABILITY.

OCTRON™ is a registered trademark of SYLVANIA.
 BIAX™ is a trademark of General Electric Co.
 LEXAN® is a registered trademark of General Electric Co.
 CONTROLENS® and REFRACTIVE GRID® are registered trademarks of Holophane Co.

BACK PLANS



For Photometric Data see Section A-page 14A

- CONSULT FACTORY FOR MINIMUM QUANTITY AND AVAILABILITY. Select the diffuser required and add suffix to cat. no. EXAMPLE: **41-240-RFA**
- ⊗ 1x4 size
- ⊗ OTHER FINISHES AVAILABLE:
 Suffix "WH" after catalog no. for white finish on louver.
 Suffix "SSG" after catalog no. for semi-spec. gold finish on louver.
 Suffix "SPG" after catalog no. for specular gold finish on louver.
 Suffix "SPS" after catalog no. for specular silver finish on louver.
 Suffix "ULB" after catalog no. for ultra low brightness finish on louver.

OPTIONS

- Suffix "LT" after catalog no. for cold weather ballast.
- Suffix "EM" after cat. no. for emerg. battery pack, see price list for types.
- Suffix "DL" after catalog no. for damp location.
- Suffix "GASK" after cat. no. for gasketed door and lens.
- Suffix "TP" after catalog no. for tamperproof screws on door.
- Suffix "XTA" after catalog no. for XTRALUME® reflector std. with 85% reflectance, for 95% reflectance please specify your requirements.

ENERGY SAVING BALLASTS Where applicable (consult factory). Suffix "ESB" / after catalog number, and then one of the following:

MAGNETIC

- "SLH"-Super Low Heat T12 Ballast
- "MM-1"-Maxi Miser 1 T12 Ballast
- "PRE"-Premium III T12 Ballast
- "OCT"-Octron T8 Ballast
- "OPT"-Optimizer Ballast
- "DIM"-Magnetic T12 Dimming Ballast

ELECTRONIC

- "EB"-Electronic T12 Ballast
- "EBO"-Electronic T8 Octron Ballast
- "EBD"-Electronic T12 Dimming Ballast
- "EBDO"-Electronic T8 Dimming Ballast
- "EBX"-Electronic (BIAX) Twin Tube Ballast
- "EBDX"-Electronic (BIAX) Twin Tube Dimming Ballast

HYBRID

- "HB"-Hybrid ESB T12 Ballast
- "HBO"-Hybrid T12 Octron Ballast

SHIELDING MEDIA

- Type (AL) 1/2" cube aluminum louver–white.
- Type (PL) 1/2" cube styrene louver–white.
- Type (PLA) 1/2" cube acrylic louver–white.
- Type (PAF) 5/8" cube Paraflex specular silver louver–styrene.
- Type (PAFA) 5/8" cube Paraflex specular silver louver–acrylic.
- Type (PW) 1/2" cube Parawedge specular silver louver–styrene.
- Type (PWA) 1/2" cube Parawedge spec. silver louver–acrylic.
- Type (PAFIVA) 3/4"x3/4"x1/2" deep Paraflex specular silver louver–acrylic.
- Type (PL3A) 3/4"x3/4"x1/2" deep high efficiency specular silver louver–acrylic.
- Type (PL5A) 3/4"x3/4"x3/8" deep high efficiency specular silver louver–acrylic.
- Type (RFA) acrylic plastic refractor.
- Type (RFL) polycarbonate Lexan® prismatic refractor.
- Type (ACR) KSH-K12 acri-tuf prismatic refractor.
- Type (K19A) KSH K19 acrylic lens.
- Type (FA) flat white acrylic.
- Type (GRA) glass fiber reinforced acrylic.
- Type (C70) Corning (AIG) #70 lens–glass.
- Type (C73) Corning (AIG) #73 lens–glass.
- Type (AIM) American injection molded acrylic.
- Type (K15A) 3/16" thick acrylic plastic refractor.
- Type (K20A) KSH K20 acrylic lens.
- Type (K11A) louvered prismatic acrylic panel.
- Type (RFI) Radio Frequency acrylic prismatic lens.
- Type (K3E) KSH K3E acrylic lens.
- Type (HO6244) Holophane 6244 Controlens®.
- Type (HO6251) Holophane 6251 Controlens®.
- Type (HO8224) Holophane 8224 Refractive Grid®.
- Type (PH) Parahex specular silver louver.
- Type (DA) Dished white acrylic.
- Type (DAP) Dished acrylic clear prismatic.
- Type (AP20) 3 1/2"x3 1/2"x1 1/2" deep 20 cell semi-specular silver low iridescence parabolic aluminum louver. ⊗
- Type (AP26) 3 1/4"x3 1/4"x1 1/2" deep 26 cell semi-specular silver low iridescence parabolic aluminum louver. ⊗
- Type (AP36) 2 1/2"x3"x1 1/2" deep 36 cell semi-specular silver low iridescence parabolic aluminum louver. ⊗
- Type (AP88) 2"x2"x1 1/4" deep 88 cell semi-specular silver low iridescence parabolic aluminum louver. ⊗

Information supplied primarily for illustrative purposes, subject to change. Consult factory for verification and minimum quantity orders.

